

---

# Locality Contacts

---

January 2017 v5

---

Staffordshire Council of Voluntary Youth  
Services

South Staffordshire Community Voluntary  
Action

Support Staffordshire



# EXECUTIVE TEAM

## CHIEF EXECUTIVE



**Phil Pusey**

**T:** 01785 240378

**M:** 07429 759641

phil@staffscvys.org.uk

## CHIEF OFFICER



**David Leese**

**T:** 01902 851675

david.leese@sscva.org.uk

## CHIEF EXECUTIVE



**Garry Jones**

**T:** 01785 413160 (Stafford)

**T:** 01543 303030 (Lichfield)

**M:** 07494 483199

garry.jones@supportstaffordshire.org.uk

# SENIOR TEAM

## Operations Manager



**Debbie Mason**

**T:** 01785 240378

debbie@staffscvys.org.uk

## Contracts Information Manager



**Nic Edmonds**

**T:** 01785 240378

**M:** 07429 745901

nic@staffscvys.org.uk

(30 Hours) Tue - Fri

## Deputy Chief Executive



**Sandra Payne**

**T:** 01543 303030 (Lichfield)

**T:** 01785 413165 (Stafford)

**M:** 07494 483206

sandra.payne@supportstaffordshire.org.uk

## North Staffordshire Operations Manager



**Jill Norman**

**T:** 01538 381356

**M:** 07495 736160

jill.norman@supportstaffordshire.org.uk

Staffordshire Council of Voluntary Youth Services  
42a Eastgate Street | Stafford | ST16 2LY

Website:  
[www.staffscvys.org.uk](http://www.staffscvys.org.uk)



**Development Worker**  
(Stafford and South Staffs)



**Lucy Cox**  
**T:** 01785 240378  
**M:** 07429 714242  
lucy@staffscvys.org.uk

(37 Hours) Mon - Fri

**Development Worker**  
(Cannock and Lichfield)



**Jane Reynolds**  
**T:** 01785 240378  
**M:** 07429 782625  
jane@staffscvys.org.uk

(37 Hours) Mon - Fri

**Development Worker**  
(Newcastle and Moorlands)



**Claire John**  
**T:** 01785 240378  
**M:** 07429 734172  
claire@staffscvys.org.uk

(37 Hours) Mon - Fri


**Development Worker**  
(Tamworth and East Staffs)



**Cheryl Rice**  
**T:** 01785 240378  
**M:** 07460 781420  
cheryl@staffscvys.org.uk

(37 Hours) Mon - Fri

**Engagement Coordinator**



**Josh Armitage**  
**T:** 01785 240378  
**M:** 07429 748227  
josh@staffscvys.org.uk

(30 Hours) Mon - Thu

South Staffs Community Voluntary Action, c/o South Staffordshire District Council | Wolverhampton Road Codsall | South Staffs | WV8 1PX

Website: [www.sscva.org.uk](http://www.sscva.org.uk)



## Social Action Officer



**Ros Burton**

**T:** 01902 851675

[ros.burton@sscva.org.uk](mailto:ros.burton@sscva.org.uk)

(17.5 hours) Mon, Tue, Thu & Fri

## Locality Officer



**Sabrina Sproston**

**T:** 01902 851675

[sabrina.sproston@sscva.org.uk](mailto:sabrina.sproston@sscva.org.uk)

(16 hours) Mon, Tue & Thu

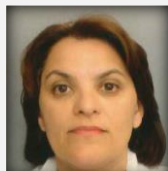
## Support Staffordshire (Lichfield and District) Mansell House

22 Bore Street | Lichfield | WS13 6LL

**Website:** [www.supportstaffordshire.org.uk /your-local-branch/lichfield-district](http://www.supportstaffordshire.org.uk/your-local-branch/lichfield-district)



### Locality Team Leader



**Faye Williams**

**T:** 01543 303030

**M:** 07496 759712

[faye.williams@supportstaffordshire.org.uk](mailto:faye.williams@supportstaffordshire.org.uk)

(28 Hours) Mon - Fri

### Locality Officer



**Mitch Payne**

**T:** 01543 303030

**M:** 07535 975839

[mitch.payne@supportstaffordshire.org.uk](mailto:mitch.payne@supportstaffordshire.org.uk)

(35 Hours) Mon - Fri

### Social Action Officer



**James Flintham**

**T:** 01543 303030

[james.flintham@supportstaffordshire.org.uk](mailto:james.flintham@supportstaffordshire.org.uk)

(15 Hours) Wed & Fri

---

## Support Staffordshire (Tamworth) | Tamworth Library | Corporation Street

Tamworth | B79 7DN

**Website:** [www.supportstaffordshire.org.uk /your-local-branch/tamworth](http://www.supportstaffordshire.org.uk/your-local-branch/tamworth)

### Senior Locality Officer



**Clare Jolly**

**T:** 01827 67255

**M:** 07500 980486

[clare.jolly@supportstaffordshire.org.uk](mailto:clare.jolly@supportstaffordshire.org.uk)

(18 Hours) Mon - Thu

### Social Action Officer



**James Flintham**

**T:** 01827 67255

[james.flintham@supportstaffordshire.org.uk](mailto:james.flintham@supportstaffordshire.org.uk)

(15 Hours) Mon & Thu

**Support Staffordshire (Cannock Chase)** | Coniston Hall | Cecil Street  
Cannock | WS11 5HG

**Website:** [www.supportstaffordshire.org.uk /your-local-branch/cannock-chase](http://www.supportstaffordshire.org.uk/your-local-branch/cannock-chase)



#### Locality Team Leader



**Esther Bromley**

**T:** 01543 500404

**M:** 07496 759702

[esther.bromley@supportstaffordshire.org.uk](mailto:esther.bromley@supportstaffordshire.org.uk)

(28 Hours) Mon - Fri

#### Locality Officer



**Michelle Reynolds**

**T:** 01543 500404

[michelle.reynolds@supportstaffordshire.org.uk](mailto:michelle.reynolds@supportstaffordshire.org.uk)

(15 Hours) Tue & Thu

#### Social Action Officer



**Stuart Scollay**

**T:** 01543 500404

[stuart.scollay@supportstaffordshire.org.uk](mailto:stuart.scollay@supportstaffordshire.org.uk)

(15 Hours) Tue & Wed

---

**Support Staffordshire (East Staffordshire)** | Voluntary Services Centre | Union  
Street Burton-on-Trent | Staffordshire | DE14 1AA

**Website:** [www.supportstaffordshire.org.uk /your-local-branch/east-staffordshire](http://www.supportstaffordshire.org.uk/your-local-branch/east-staffordshire)

#### Locality Team Leader



**Sally Groves**

**T:** 01283 543414

**M:** 07496 759764

[sally.groves@supportstaffordshire.org.uk](mailto:sally.groves@supportstaffordshire.org.uk)

(28 Hours) Mon - Fri

#### Locality & Social Action Officer



**Zoe Crozier**

**T:** 01283 543414

[zoe.crozier@supportstaffordshire.org.uk](mailto:zoe.crozier@supportstaffordshire.org.uk)

(30 Hours) Mon - Fri

**Support Staffordshire (Stafford and District) & (Newcastle)**

Civic Centre | Riverside | StaffordST16 3AQ

**Website:** [www.supportstaffordshire.org.uk /your-local-branch/stafford-district](http://www.supportstaffordshire.org.uk/your-local-branch/stafford-district)



**Senior Locality Officer**



**Barry Halls**  
**T:** 01785 413163

[barry.halls@supportstaffordshire.org.uk](mailto:barry.halls@supportstaffordshire.org.uk)

**(18 Hours) Tue - Thu**

**Locality Officer (Stafford and Newcastle)**



**Natalie Shields**  
**T:** 01785 413155  
**M:** 07507 643187

[natalie.shields@supportstaffordshire.org.uk](mailto:natalie.shields@supportstaffordshire.org.uk)

**(30 Hours) Mon - Thu**

**Social Action Officer (Stafford)**



**Sandra Grosvenor**  
**T:** 01785 413163

[sandra.grosvenor@supportstaffordshire.org.uk](mailto:sandra.grosvenor@supportstaffordshire.org.uk)

**(15 Hours) Mon & Tue**

**Social Action Officer (Newcastle)**



**Julie Hughes**  
**T:** 01538 381356  
**M:** 07507 643145

[julie.hughes@supportstaffordshire.org.uk](mailto:julie.hughes@supportstaffordshire.org.uk)

**(15 Hours) Tue, Wed & Thu**



**Support Staffordshire (Staffordshire Moorlands)** | Bank House | 20 St. Edward Street Leek | Staffordshire | ST13 5DS

**Website:** [www.supportstaffordshire.org.uk /your-local-branch/staffordshire-moorlands](http://www.supportstaffordshire.org.uk/your-local-branch/staffordshire-moorlands)

#### Locality Team Leader



**Esther Jones**

**T:** 01538 381356

**M:** 07837 127165

[esther.jones@supportstaffordshire.org.uk](mailto:esther.jones@supportstaffordshire.org.uk)

(30 Hours) Tue - Fri

#### Locality Officer



**Sue Green**

**T:** 01538 381356

**M:** 07837 127165

[sue.green@supportstaffordshire.org.uk](mailto:sue.green@supportstaffordshire.org.uk)

(12 Hours) Mon & Tue

#### Locality & Social Action Officer



**Kathryn Bentham**

**T:** 01538 381356

**M:** 07837 127165

[kathryn.bentham@supportstaffordshire.org.uk](mailto:kathryn.bentham@supportstaffordshire.org.uk)

(30 Hours) Tue - Fri

## Support Staffordshire (Central Services Team)

Marketing and Communications  
Information Management  
Membership Services  
Customer Services  
Training



### Central Services Team Leader



**Elaine Denney**

**T:** 01785 413161

**M:** 07495 734545

(Based in Stafford)

[elaine.denney@supportstaffordshire.org.uk](mailto:elaine.denney@supportstaffordshire.org.uk)

(30 Hours) Mon - Fri

### Training and Marketing Officer



**Jennie Stewart**

**T:** 01785 413162

(Based in Stafford)

[jennie.stewart@supportstaffordshire.org.uk](mailto:jennie.stewart@supportstaffordshire.org.uk)

(30 Hours) Mon - Thu

### Information Officer



**Claire Terry**

**T:** 01827 67255

(Based in Tamworth)

[claire.terry@supportstaffordshire.org.uk](mailto:claire.terry@supportstaffordshire.org.uk)

(30 Hours) Mon - Thu

### Customer Services Support Officer



**Rebecca Downes**

**T:** 01827 67255

(Based in Tamworth)

[rebecca.downes@supportstaffordshire.org.uk](mailto:rebecca.downes@supportstaffordshire.org.uk)

(27 Hours) Mon - Thu